



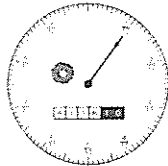
# WATER CONSERVATION

## Ways you can Use Water Wisely...

1. Program your watering system to water less during the rainy season and remember to turn the sprinklers off on expected rainy days.



2. Fix your Leaks! Check your water meter and pay attention to your water use. Your meter has a low flow indicator (usually in blue). If it's turning when all your fixtures (including ice makers) are off, it's a good indication you may have a leak somewhere.



For more ways to save water go to [www.wvwd.com](http://www.wvwd.com) and [bewaterwise.com](http://bewaterwise.com)



### New Water Bill Format

The newly designed bill includes the same information and also provides customers with more personalized water usage information. Listed below are some of the highlights that have been included.

- ◆ Allows customers to review their historical water use.
- ◆ Provides detailed account information on current and previous billing activity.
- ◆ Recommends voluntary conservation goals specific to each community.

Walnut Valley Water District  
271 South Brea Canyon Rd.  
Walnut, CA 91789  
(909) 595-1268

December 2006



# WALNUT VALLEY WATER DISTRICT

## East West Bank to Accept District's Water Payments

Beginning in December 2008, the District will be offering its customers additional convenience and flexibility in making water bill payments. Customers will be able to make their water bill payments at one of the five local East West Bank branches listed below.



華美銀行  
EASTWEST BANK

<b>Diamond Bar</b> 379 So. Diamond Bar Blvd. (909) 861-3676	<b>Diamond Bar</b> 1132 So. Diamond Bar Blvd. (909) 612-1688
<b>Rowland Heights</b> 18458 Colima Road (626) 854-0070	<b>Rowland Heights</b> 1015 Nogales Street, #114 (626) 581-0573
<b>Walnut</b> 20607-I Amar Road (909) 869-7232	

To make a payment at the bank, please bring in your water bill and allow ample time for the payment to post. A reminder, to avoid service interruption, please be aware that payments made at the bank branches may take up to 48 hours to be credited to your account.

### Extended Office Hours

To better serve our customers, the District has also expanded its office hours, opening one hour earlier, at 7:00 a.m., five days a week. The office will close at 4:00 p.m. on Friday.

For further information on any of these programs visit us at [www.wvwd.com](http://www.wvwd.com) or contact the District's Customer Service Department at (909) 595-1268 or (626) 964-6551.